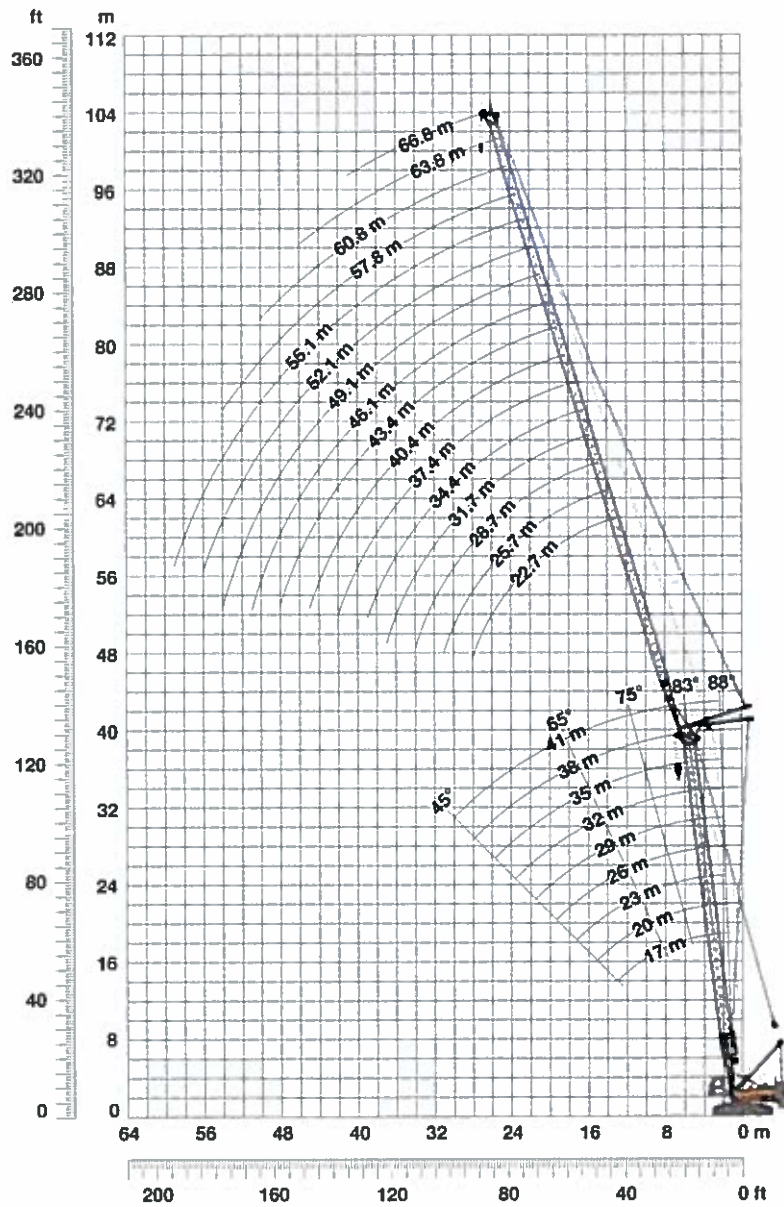


100+

# Working range - luffing jib 78° - 15° (No. 1309.xx)

Main boom 88° - 45°



Boom configuration for main boom lengths (14 m - 41 m) - see table on page 10

Jib configuration for jib lengths (22.7 m - 66.8 m)

Luffing jib part	Length	Amount of luffing jib extensions															
		22.7	25.7	28.7	31.7	34.4	37.4	40.4	43.4	46.1	49.1	52.1	55.1	57.8	60.8	63.8	66.8
Luffing jib foot	5.5 m	1	1	1	1	1	1	1	1	1	1	1	1	1	1	1	1
Luffing jib insert	3 m		1		1		1		1		1		1		1		1
Luffing jib insert	6 m			1	1			1	1			1	1			1	1
Luffing jib insert	11.7 m	1	1	1	1	2	2	2	2	3	3	3	3	4	4	4	4
Luffing jib head	5.5 m	1	1	1	1	1	1	1	1	1	1	1	1	1	1	1	1
Luffing jib length (m)		22.7	25.7	28.7	31.7	34.4	37.4	40.4	43.4	46.1	49.1	52.1	55.1	57.8	60.8	63.8	66.8

100+

# Lift chart - luffing jib (No. 1309.xx)

TLT 10279385- M00000 Offiziell

Main boom angle 88°, standard counterweight

Main boom 17 m

Radius (m)	Jib length in (m)							
	22.7	31.7	37.4	43.4	49.1	55.1	60.8	66.8
7.7	34.6	t	t	t	t	t	t	t
10	27.4	24.5						
11	25.0	22.4	20.3					
12	22.7	20.8	19.2	15.7				
14	19.5	18.0	16.7	14.9	12.7			
15	18.0	16.6	15.6	14.4	12.3	9.7		
16	16.7	15.5	14.7	13.4	12.1	9.4	8.1	
17	15.7	14.6	13.8	12.7	11.5	9.2	7.9	6.3
20	13.0	12.1	11.5	10.7	10.0	8.5	7.4	5.9
24	10.6	9.9	9.4	8.8	8.2	7.4	6.7	5.4
32		7.3	6.9	6.5	6.0	5.5	5.0	4.3
38			5.7	5.3	4.9	4.5	4.0	3.5
44				4.4	4.0	3.6	3.3	2.8
50					3.4	3.0	2.6	2.2
55						2.5	2.2	

Main boom 23 m

Radius (m)	Jib length in (m)							
	22.7	31.7	37.4	43.4	49.1	55.1	60.8	66.8
7.9	29.2	t	t	t	t	t	t	t
10	24.4	20.9						
11	22.5	19.5	17.5					
13	19.1	17.2	15.8					
14	17.9	16.2	14.8	14.1				
15	16.6	15.1	13.9	12.6	11.2	9.0		
16	15.4	14.1	13.2	11.9	10.7	8.8	7.4	
18	13.7	12.7	11.7	10.7	9.6	8.4	7.2	5.8
20	12.1	11.2	10.5	9.6	8.8	7.6	6.8	5.5
24	10.0	9.2	8.7	8.0	7.3	6.6	5.8	4.9
32		6.8	6.4	5.9	5.4	4.9	4.4	3.8
38			5.3	4.8	4.4	4.0	3.6	3.1
44				4.1	3.7	3.2	2.9	2.5
50					3.1	2.7	2.3	
55						2.3		

Main boom 29 m

Radius (m)	Jib length in (m)							
	22.7	31.7	37.4	43.4	49.1	55.1	60.8	66.8
8.1	25.9	t	t	t	t	t	t	t
10	22.8	19.0						
12	19.7	17.2	15.3					
13	18.3	16.0	14.4	12.8				
14	17.2	15.1	13.7	12.2	10.5			
15	16.0	14.3	12.9	11.6	10.2	8.2		
18	15.0	13.4	12.3	11.0	9.7	8.2	6.8	
18	13.4	12.0	11.0	10.0	8.9	7.8	6.6	5.3
20	11.9	10.8	10.0	9.0	8.1	7.1	6.3	5.1
24	9.9	8.9	8.3	7.6	6.8	6.1	5.3	4.5
32		6.7	6.2	5.7	5.2	4.6	4.1	3.4
38			5.2	4.7	4.3	3.8	3.3	2.8
44				4.0	3.5	3.1	2.7	2.3
50					3.0	2.5	2.2	
55						2.2		

Main boom 35 m

Radius (m)	Jib length in (m)							
	22.7	31.7	37.4	43.4	49.1	55.1	60.8	66.8
8.3	21.8	t	t	t	t	t	t	t
11	19.0	15.5						
12	18.1	14.7	12.9					
13	17.0	14.1	12.3	10.5				
14	16.3	13.5	11.9	10.2	8.7			
16	14.5	12.3	10.9	9.4	8.2	6.9		
18	13.1	11.4	10.0	8.7	7.8	6.4	5.4	4.4
20	11.7	10.3	9.2	8.1	7.1	6.0	5.1	4.1
24	9.8	8.7	7.9	7.0	6.2	5.3	4.4	3.6
32		6.6	6.0	5.5	4.9	4.2	3.7	2.9
38			5.1	4.6	4.1	3.6	3.1	2.5
44				3.9	3.5	3.0	2.6	2.1
46					3.3	2.8	2.4	2.0
50					3.0	2.5	2.1	
55						2.2		

Main boom 38 m

Radius (m)	Jib length in (m)							
	22.7	31.7	37.4	43.4	49.1	55.1	60.8	66.8
8.4	18.7	t	t	t	t	t	t	t
11	16.3	13.4						
12	15.5	12.7	11.2					
13	14.7	12.1	10.7	9.1				
14	14.0	11.6	10.3	8.8	7.5			
16	12.6	10.5	9.3	8.1	7.0	6.0		
17	11.9	10.0	9.0	7.8	6.8	5.7	4.8	
18	11.4	9.6	8.6	7.5	6.5	5.5	4.7	3.7
20	10.5	8.8	7.8	6.9	6.0	5.1	4.3	3.5
24	9.1	7.5	6.7	5.9	5.2	4.4	3.7	3.0
32		6.1	5.4	4.7	4.1	3.4	2.9	2.2
38			4.7	4.1	3.5	2.9	2.4	
42				3.7	3.2	2.6	2.1	
44					3.6	3.1	2.5	
50						2.7	2.2	

Main boom 41 m

Radius (m)	Jib length in (m)					
	22.7	31.7	37.4	43.4	49.1	55.1
8.5	16.8	t	t	t	t	t
11	14.9	12.1				
12	14.2	11.5	10.1			
13	13.4	11.0	9.6	8.2		
14	12.7	10.5	9.3	7.9	6.7	
16	11.5	9.6	8.4	7.3	6.3	5.3
18	10.6	8.8	7.7	6.7	5.8	4.9
20	9.7	8.0	7.1	6.2	5.3	4.5
24	8.5	6.9	6.1	5.2	4.6	3.8
28		6.2	5.4	4.6	4.0	3.4
34		5.4	4.8	4.0	3.4	2.8
38			4.4	3.7	3.1	2.5
44				3.2	2.7	2.1
46					2.6	2.0
50					2.4	

Capacities in metric tonnes with luffing jib (No. 1309.xx) 34 t counterweight + 20 t carbody counterweight. Above lift chart is for reference only. For actual lift duty and complete chart with all available configurations please refer to lift chart in operator's cab or manual.

100+

# Lift chart - luffing jib (No. 1309.xx)

TLT 10279385-M00000 Offiziell

Main boom angle 83°, standard counterweight

## Main boom 17 m

Radius (m)	Jib length in (m)							
	22.7	31.7	37.4	43.4	49.1	55.1	60.8	66.8
11.1	t	t	t	t	t	t	t	t
14	28.4							
16	22.2	20.5						
18	19.1	17.8	17.0					
19	16.6	15.5	14.8	13.7				
22	15.6	14.6	13.9	13.0	11.4			
24	12.9	12.2	11.7	11.0	10.2	8.3		
26	11.8	11.0	10.5	9.9	9.3	8.0	6.9	5.4
34	10.7	10.0	9.6	9.1	8.6	7.6	6.7	5.3
38		7.4	7.1	6.7	6.4	5.8	5.4	4.7
40			6.3	5.9	5.5	5.1	4.7	4.2
46			5.8	5.5	5.2	4.8	4.4	3.9
50				4.6	4.3	3.8	3.5	3.2
55					3.8	3.4	3.1	2.7
60						2.9	2.6	2.2
60							2.1	

## Main boom 23 m

Radius (m)	Jib length in (m)							
	22.7	31.7	37.4	43.4	49.1	55.1	60.8	66.8
11.9	t	t	t	t	t	t	t	t
15	24.6							
17	19.4	17.8						
18	16.9	15.7	14.6					
20	15.8	14.6	13.8	12.3				
22	14.0	13.1	12.3	11.3	10.2			
24	12.4	11.6	11.0	10.3	9.4	7.9		
26	11.2	10.5	10.0	9.3	8.6	7.5	6.5	
30	10.3	9.6	9.1	8.6	7.9	7.1	6.2	5.0
34		8.1	7.8	7.3	6.8	6.2	5.5	4.8
38		7.2	6.7	6.4	5.9	5.4	4.9	4.2
40			6.0	5.5	5.2	4.7	4.2	3.7
46			5.6	5.1	4.8	4.4	4.0	3.5
50				4.3	4.0	3.6	3.3	2.8
55					3.5	3.1	2.8	2.4
55						2.7	2.4	

## Main boom 29 m

Radius (m)	Jib length in (m)							
	22.7	31.7	37.4	43.4	49.1	55.1	60.8	66.8
12.6	t	t	t	t	t	t	t	t
16	22.7							
17	18.1	16.2						
19	17.0	15.2	13.7					
22	14.9	13.6	12.6	11.2				
24	12.6	11.6	10.7	9.9	8.9			
26	11.3	10.5	9.9	9.0	8.2	7.1	6.0	
30	10.5	9.6	9.0	8.3	7.5	6.7	5.8	4.7
34		8.2	7.8	7.2	6.6	5.9	5.3	4.4
36		7.3	6.7	6.3	5.8	5.2	4.7	4.0
40		6.8	6.3	5.9	5.5	4.8	4.4	3.8
44			5.6	5.1	4.8	4.3	3.8	3.3
46				4.6	4.2	3.8	3.4	2.9
50				4.4	3.9	3.5	3.2	2.7
55					3.5	3.1	2.8	2.3
55						2.7	2.4	

## Main boom 35 m

Radius (m)	Jib length in (m)							
	22.7	31.7	37.4	43.4	49.1	55.1	60.8	66.8
13.3	t	t	t	t	t	t	t	t
16	18.6							
18	16.6	13.6						
20	15.2	12.7	11.1					
22	13.7	11.7	10.4	8.9				
24	12.5	10.9	9.6	8.4	7.2			
26	11.4	10.1	9.0	7.9	6.8	5.7		
28	10.5	9.5	8.5	7.5	6.5	5.5	4.6	
32	9.7	8.8	8.1	7.1	6.2	5.3	4.4	3.6
36		7.7	7.2	6.5	5.7	4.9	4.1	3.4
40		6.8	6.3	5.8	5.2	4.5	3.9	3.1
42			5.6	5.2	4.7	4.1	3.5	2.9
46			5.3	4.9	4.4	3.9	3.4	2.7
48				4.0	3.7	3.3	2.9	2.4
50					3.5	3.1	2.7	2.2
55						2.6	2.3	

## Main boom 38 m

Radius (m)	Jib length in (m)							
	22.7	31.7	37.4	43.4	49.1	55.1	60.8	66.8
13.7	t	t	t	t	t	t	t	t
17	15.6							
18	13.5	11.3						
20	12.9	10.8	9.4					
22	11.7	9.9	8.8	7.6				
24	10.9	9.2	8.1	7.1	6.2			
26	10.1	8.5	7.5	6.6	5.8	4.9		
28	9.6	7.9	7.1	6.2	5.4	4.6	3.9	
32	9.1	7.5	6.7	5.9	5.2	4.4	3.7	3.0
36		6.9	6.1	5.3	4.7	4.0	3.3	2.7
42		6.3	5.6	4.9	4.2	3.6	3.0	2.4
46			4.9	4.3	3.7	3.1	2.5	
48				3.9	3.4	2.8	2.3	
50				3.8	3.3	2.7	2.2	
55					3.1	2.6	2.0	
55						2.3		

## Main boom 41 m

Radius (m)	Jib length in (m)					
	22.7	31.7	37.4	43.4	49.1	55.1
14.1	t	t	t	t	t	t
17	13.7					
19	12.0	9.9				
22	11.0	9.2	8.1			
24	9.8	8.1	7.2	6.2	5.3	
26	9.2	7.5	6.6	5.8	5.0	4.1
28	8.7	7.1	6.2	5.4	4.7	3.9
32	8.3	6.7	5.9	5.2	4.4	3.7
36		6.2	5.4	4.6	4.0	3.3
40		5.7	5.0	4.3	3.6	3.0
42			4.6	3.9	3.3	2.7
44			4.4	3.8	3.2	2.6
46				3.6	3.1	2.5
48				3.5	3.0	2.3
50				3.3	2.8	2.2
50					2.7	2.1

Capacities in metric tonnes with luffing jib (No. 1309.xx) 34 t counterweight + 20 t carbody counterweight. Above lift chart is for reference only. For actual lift duty and complete chart with all available configurations please refer to lift chart in operator's cab or manual.

100+

# Lift chart - luffing jib (No. 1309.xx)

TLT 10279385- M00000 Offiziell

Main boom angle 75°, standard counterweight

## Main boom 17 m

Radius (m)	Jib length in (m)							
	22.7	31.7	37.4	43.4	49.1	55.1	60.8	66.8
16.5	t	t	t	t	t	t	t	t
22	18.6							
24	13.3	12.8						
26	11.9	11.6	11.2					
28	10.7	10.5	10.3	9.8				
32	9.7	9.5	9.3	9.0	8.5			
34		7.9	7.8	7.6	7.3	6.8		
36		7.3	7.1	6.9	6.7	6.3	6.0	
40		6.7	6.6	6.4	6.2	5.8	5.5	4.7
42			5.6	5.5	5.3	5.0	4.7	4.3
46			5.2	5.1	4.9	4.7	4.4	4.0
48				4.4	4.2	4.0	3.7	3.4
50				4.1	3.9	3.7	3.5	3.1
55					3.6	3.4	3.2	2.9
60						2.8	2.6	2.4
							2.1	

## Main boom 23 m

Radius (m)	Jib length in (m)							
	22.7	31.7	37.4	43.4	49.1	55.1	60.8	66.8
18	t	t	t	t	t	t	t	t
22	15.7							
26	12.7	11.8						
28	10.3	9.9	9.4					
30	9.4	9.1	8.7	8.2				
32		8.3	8.0	7.5	7.2			
36		7.6	7.4	7.0	6.6	6.2		
38		6.4	6.3	6.0	5.6	5.3	4.9	
40		5.9	5.8	5.6	5.2	4.9	4.5	4.1
44			5.4	5.2	4.9	4.5	4.2	3.8
46			4.6	4.4	4.2	3.9	3.6	3.2
48				4.1	3.9	3.6	3.3	2.9
50				3.8	3.6	3.3	3.0	2.7
55					3.4	3.1	2.8	2.5
60					2.8	2.6	2.3	
						2.1		

## Main boom 29 m

Radius (m)	Jib length in (m)							
	22.7	31.7	37.4	43.4	49.1	55.1	60.8	66.8
19.6	t	t	t	t	t	t	t	t
24	13.2							
26	10.7	9.9						
30	9.8	9.0	8.6					
32	8.2	7.7	7.3	6.8				
34		7.1	6.7	6.3	5.9			
36		6.6	6.2	5.8	5.5	5.1		
38		6.1	5.8	5.4	5.0	4.7	4.2	
40		5.6	5.4	5.0	4.7	4.3	3.9	
42		5.2	5.0	4.7	4.3	4.0	3.6	3.1
44			4.7	4.4	4.0	3.7	3.3	2.9
46			4.3	4.1	3.7	3.4	3.0	2.6
48				3.8	3.5	3.1	2.8	2.4
50				3.5	3.2	2.9	2.6	2.2
55				3.3	3.0	2.7	2.4	2.0
					2.5	2.2		

## Main boom 35 m

Radius (m)	Jib length in (m)							
	22.7	31.7	37.4	43.4	49.1	55.1	60.8	66.8
21.1	t	t	t	t	t	t	t	t
26	11.1							
28	8.9	8.1						
30	8.2	7.5	7.1					
32	7.6	6.9	6.5	6.1				
34	7.0	6.4	6.0	5.6				
36		5.9	5.6	5.1	4.8			
38		5.5	5.2	4.8	4.4	4.0		
40		5.1	4.8	4.4	4.1	3.7	3.2	
42		4.8	4.5	4.1	3.8	3.4	3.0	2.5
44			4.2	3.8	3.5	3.1	2.7	2.2
46			3.9	3.5	3.2	2.9	2.5	2.0
48			3.6	3.3	3.0	2.6	2.3	
50				3.1	2.8	2.4	2.1	
55				2.9	2.5	2.2		
					2.1			

## Main boom 38 m

Radius (m)	Jib length in (m)						
	22.7	31.7	37.4	43.4	49.1	55.1	60.8
21.9	t	t	t	t	t	t	t
26	10.2						
30	8.5	7.7					
32	7.2	6.5	6.1				
34	6.7	6.0	5.7	5.2			
36		5.6	5.2	4.8	4.4		
38		5.2	4.8	4.4	4.1	3.6	
40		4.8	4.5	4.1	3.7	3.3	2.8
42		4.5	4.2	3.8	3.5	3.0	2.6
44		4.2	3.9	3.5	3.2	2.8	2.3
46			3.6	3.3	3.0	2.5	2.1
48			3.4	3.0	2.7	2.3	
50			3.2	2.8	2.5	2.2	
				2.6	2.3		

## Main boom 41 m

Radius (m)	Jib length in (m)					
	22.7	31.7	37.4	43.4	49.1	55.1
22.7	t	t	t	t	t	t
28	9.3					
30	7.4	6.6				
32	6.8	6.1	5.7			
34	6.3	5.7	5.3	4.8		
36	5.9	5.2	4.9	4.5	3.9	
38		4.9	4.5	4.1	3.7	
40		4.5	4.2	3.8	3.4	2.9
42		4.2	3.9	3.5	3.1	2.7
44		3.9	3.6	3.2	2.9	2.4
46			3.4	3.0	2.7	2.2
48			3.1	2.8	2.5	2.0
50			2.9	2.6	2.3	
				2.4	2.1	

Capacities in metric tonnes with luffing jib (No. 1309.xx) 34 t counterweight + 20 t carbody counterweight. Above lift chart is for reference only. For actual lift duty and complete chart with all available configurations please refer to lift chart in operator's cab or manual.

100%

# Lift chart - luffing jib (No. 1309.xx)

TLT 10279385- M00000 Offiziell

Main boom angle 65°, standard counterweight

## Main boom 17 m

Radius (m)	Jib length in (m)							
	22.7	31.7	37.4	43.4	49.1	55.1	60.8	66.8
22.7	11.9							
28	9.1	8.7						
30	8.3	8.0						
32		7.3	7.1					
34		6.7	6.5					
36		6.2	6.0	5.8				
38		5.7	5.5	5.3	5.1			
40			5.1	4.9	4.7			
42			4.7	4.5	4.3	4.1		
44			4.4	4.2	4.0	3.8		
46				3.9	3.7	3.5	3.2	
48				3.6	3.4	3.2	2.9	2.6
50				3.3	3.2	2.9	2.7	2.4
55					2.6	2.4	2.2	

## Main boom 23 m

Radius (m)	Jib length in (m)							
	22.7	31.7	37.4	43.4	49.1	55.1	60.8	
25.2	9.6							
32	7.0	6.7						
34		6.1	5.9					
36		5.6	5.4					
38		5.2	5.0	4.7				
40		4.8	4.6	4.4				
42		4.4	4.3	4.0	3.7			
44			4.0	3.7	3.5	3.1		
46			3.7	3.5	3.2	2.8		
48			3.4	3.2	3.0	2.6	2.3	
50				3.0	2.8	2.4	2.1	
55					2.2			

## Main boom 29 m

Radius (m)	Jib length in (m)					
	22.7	31.7	37.4	43.4	49.1	
27.8	7.7					
34	5.9	5.4				
36	5.4	5.0				
38		4.7	4.3			
40		4.3	4.0	3.6		
42		4.0	3.7	3.3		
44		3.7	3.5	3.1	2.8	
46			3.2	2.9	2.5	
48			3.0	2.6	2.3	
50			2.7	2.4	2.1	
55				2.0		

## Main boom 35 m

Radius (m)	Jib length in (m)					
	22.7	31.7	37.4	43.4		
30.3	5.9					
36	4.8	4.1				
38	4.4	3.8				
40		3.5	3.2			
42		3.3	2.9			
44		3.0	2.7	2.3		
46		2.8	2.5	2.1		
48			2.3			
50			2.1			

## Main boom 38 m

Radius (m)	Jib length in (m)					
	22.7	31.7	37.4			
31.6	5.1					
38	4.0	3.4				
40	3.7	3.1	2.8			
42		2.9	2.6			
44		2.7	2.4			
46		2.5	2.2			
48		2.3				

## Main boom 41 m

Radius (m)	Jib length in (m)					
	22.7	31.7	37.4			
32.8	4.4					
38	3.6	3.0				
40	3.3	2.7				
42		2.5	2.2			
44		2.3				
46		2.1				

Capacities in metric tonnes with luffing jib (No. 1309.xx) 34 t counterweight + 20 t carbody counterweight. Above lift chart is for reference only. For actual lift duty and complete chart with all available configurations please refer to lift chart in operator's cab or manual.